

Technical Specifications

Body Size	Pressure Rating				Burst Pressure						Max. Pressure Connect ³		Max. Pressure Disconnect ³		Rated Flow ΔP=21.75 PSI	
	ISO Working ¹		Max. Im-pulse ²		Connected		Coupler		Plug							
	PSI	MPa	PSI	MPa	PSI	MPa	PSI	MPa	PSI	MPa	PSI	MPa	PSI	MPa	GPM	L/min
1/4"	6,000	40	9,000	62	24,000	165	22,000	152	22,000	152	5,500	38	5,500	38	3.5	13
3/8"	5,500	38	8,000	55	22,000	152	18,000	124	20,000	138	4,500	31	4,500	31	10.5	40
1/2"	5,500	38	8,000	55	22,000	152	18,000	124	20,000	138	4,500	31	4,500	31	17.5	66
3/4"	5,500	38	8,000	55	22,000	152	18,000	124	20,000	138	4,500	31	4,500	31	22.7	85
1"	5,500	38	7,500	52	22,000	152	14,500	100	20,000	138	3,625	25	3,625	25	32.5	123
1-1/4"	5,000	35	7,000	48	20,000	138	14,500	100	16,000	110	3,625	25	3,625	25	46.4	174
1-1/2"	4,500	31	5,800	40	18,000	124	12,000	83	14,500	100	3,000	21	3,000	21	95.0	360

¹ Couplings Impulse tested in accordance with ISO7241-2 for 1,000,000 cycles connected and 100,000 cycles disconnected at 133% of ISO Working Pressure.

² Couplings Impulse tested in accordance with ISO7241-2 for 100,000 cycles connected and disconnected at Maximum Impulse pressure listed

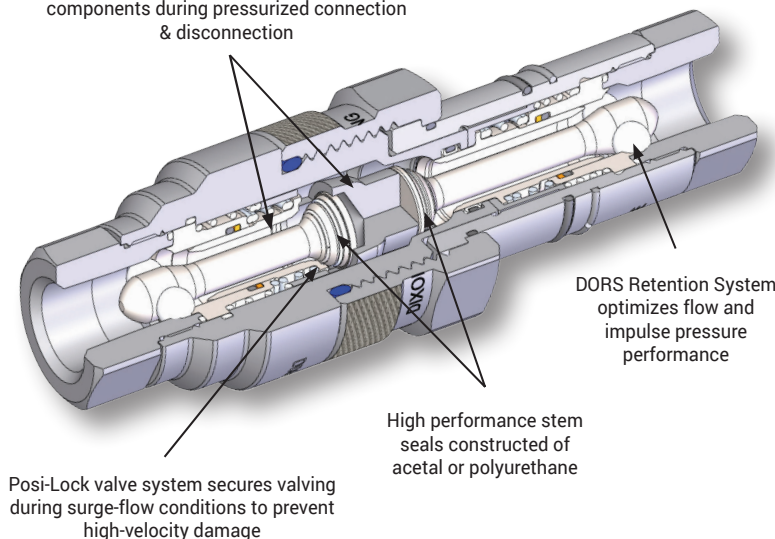
³ System temperature for Maximum Connect/Disconnect Pressure must not exceed 150°F (65°C)

How to Connect & Disconnect the VEP-Series Coupling

1. Prior to connecting, thoroughly clean all mating surfaces and threads on both halves, then pull the coupler sleeve forward.
2. To initiate the connection, align the coupler and plug, pushing/turning the coupler sleeve towards the plug while engaging the threads.
3. Allow the threads to pull the coupler onto the plug, do not push the coupler onto the plug.
4. The first phase of the connection should be threaded by hand, without the use of tools. Please note the connection sleeve may seize when dirt and debris accumulate in the threads - wipe away debris with a cloth, compressed air, or a brush.
5. The second phase of the connection may require a wrench if the pressure is higher than anticipated.
6. Continue to thread the coupler sleeve onto the plug until the end of the sleeve meets the plug body.
7. To disconnect, use a wrench to break the coupler sleeve free and keep the mating halves aligned during the disconnection process.

Attributes:

Two-stage valving to protect critical sealing components during pressurized connection & disconnection



VEP-Series Coupling

Applications

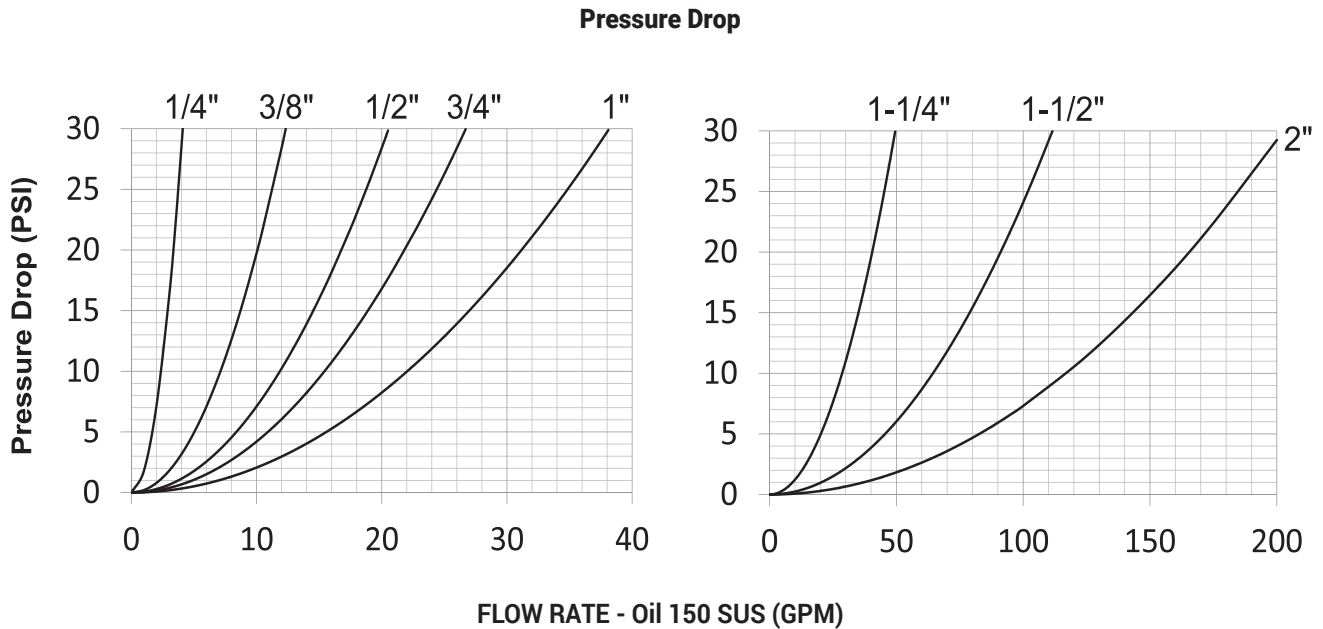
- High impulse hydraulic applications
- Oil field equipment
- BOP accumulator systems
- Construction equipment
- Crane systems
- Anywhere there's a need for a tough, reliable hydraulic connection

Features

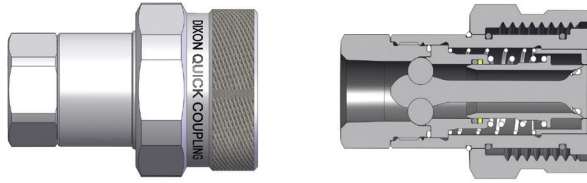
- Fully interchangeable with Stucchi VEP/VEP-HD, DNP FSI/PST4, Parker FET, Holmbury HFT, and Voswinkel FT
- Available with NPTF, BSPP, Code 62, and ORB end connections
- Improved connect and disconnect performance up to **5,500 PSI**
- Patented valve mechanism optimizes flow and pressure performance
- Superior corrosion resistance using ROHS compliant zinc nickel plating

Specifications

- Temperature range: **-40°F to 212°F (-40°C to 100°C)**

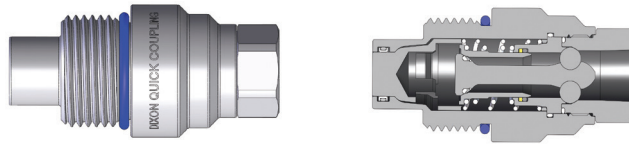


Female Threaded Couplers



Size	Thread	Length		Maximum OD		Hex Inch	Part #
		in	mm	in	mm		
1/4	1/4" - 18 NPTF	2.14	54.4	1.49	37.8	7/8"	2VEPF2
1/4	1/4" - 19 BSPP	2.14	54.4	1.49	37.8	7/8"	2VEPBF2
1/4	9/16" - 18 ORB	2.14	54.4	1.49	37.8	7/8"	2VEPOF3
3/8"	3/8" - 18 NPTF	2.55	64.8	1.62	41.1	1"	3VEPF3
3/8"	3/8" - 19 BSPP	2.55	64.8	1.62	41.1	1"	3VEPBF3
3/8"	3/4" - 16 ORB	2.77	70.4	1.62	41.1	1"	3VEPOF4
3/8"	1/2" - 14 NPTF	2.77	70.4	1.62	41.1	1-1/8"	3VEPF4
3/8"	1/2" - 14 BSPP	2.77	70.4	1.62	41.1	1-1/8"	3VEPBF4
1/2"	1/2" - 14 NPTF	3.08	78.2	1.98	50.3	1-3/16"	4VEPF4
1/2"	1/2" - 14 BSPP	3.08	78.2	1.98	50.3	1-3/16"	4VEPBF4
1/2"	3/4" - 16 ORB	3.08	78.2	1.98	50.3	1-3/16"	4VEPOF4
1/2"	7/8" - 14 ORB	3.18	80.8	1.98	50.3	1-1/4"	4VEPOF5
1/2"	3/4" - 14 NPTF	3.38	85.9	1.98	50.3	1-1/2"	4VEPF6
1/2"	3/4" - 14 BSPP	3.38	85.9	1.98	50.3	1-1/2"	4VEPBF6
1/2"	1-1/16" - 12 ORB	3.58	90.9	1.98	50.3	1-1/2"	4VEPOF6
3/4"	3/4" - 14 NPTF	3.37	85.6	2.19	55.6	1-1/2"	6VEPF6
3/4"	3/4" - 14 BSPP	3.37	85.6	2.19	55.6	1-1/2"	6VEPBF6
3/4"	1-1/16" - 12 ORB	3.37	85.6	2.19	55.6	1-1/2"	6VEPOF6
1"	1" - 11-1/2 NPTF	3.89	98.8	2.46	62.5	1-3/4"	8VEPF8
1"	1" - 11 BSPP	3.89	98.8	2.46	62.5	1-3/4"	8VEPBF8
1"	1-5/16" - 12 ORB	3.89	98.8	2.46	62.5	1-3/4"	8VEPOF8
1-1/4"	1-1/4" - 11-1/2 NPTF	4.40	111.8	2.70	68.6	2-3/16"	10VEPF10
1-1/4"	1-1/4" - 11 BSPP	4.40	111.8	2.70	68.6	2-3/16"	10VEPBF10
1-1/4"	1-5/8" - 12 ORB	4.40	111.8	2.70	68.6	2-3/16"	10VEPOF10
1-1/4"	1-1/2" - 11-1/2 NPTF	5.28	134.1	3.74	95.0	2-1/2"	12VEPF12
1-1/2"	1-1/2" - 11 BSPP	5.28	134.1	3.74	95.0	2-1/2"	12VEPBF12
1-1/2"	1-7/8" - 12 ORB	5.28	134.1	3.74	95.0	2-1/2"	12VEPOF12

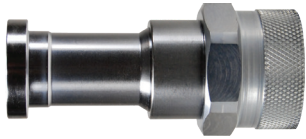
Female Threaded Plugs



Size	Thread	Length		Maximum OD		Hex Inch	Part #
		in	mm	in	mm		
1/4"	1/4" - 18 NPTF	2.67	67.8	1.35	34.3	7/8"	VEP2F2
1/4"	1/4" - 19 BSPP	2.67	67.8	1.35	34.3	7/8"	VEP2BF2
1/4"	9/16" - 18 ORB	2.67	67.8	1.35	34.3	7/8"	VEP2OF3
3/8"	3/8" - 18 NPTF	3.28	83.3	1.48	37.6	1"	VEP3F3
3/8"	3/8" - 19 BSPP	3.28	83.3	1.48	37.6	1"	VEP3BF3
3/8"	3/4" - 16 ORB	3.50	88.9	1.48	37.6	1"	VEP3OF4
3/8"	1/2" - 14 NPTF	3.50	88.9	1.48	37.6	1-1/8"	VEP3F4
3/8"	1/2" - 14 BSPP	3.50	88.9	1.48	37.6	1-1/8"	VEP3BF4
1/2"	1/2" - 14 NPTF	3.87	98.3	1.86	47.2	1-3/16"	VEP4F4
1/2"	1/2" - 14 BSPP	3.87	98.3	1.86	47.2	1-3/16"	VEP4BF4
1/2"	3/4" - 16 ORB	3.87	98.3	1.86	47.2	1-3/16"	VEP4OF4
1/2"	7/8" - 14 ORB	3.97	100.8	1.86	47.2	1-1/4"	VEP4OF5
1/2"	3/4" - 14 NPTF	4.07	103.4	1.86	47.2	1-1/2"	VEP4F6
1/2"	3/4" - 14 BSPP	4.07	103.4	1.86	47.2	1-1/2"	VEP4BF6
1/2"	1-1/16" - 12 ORB	4.27	108.5	1.86	47.2	1-1/2"	VEP4OF6
3/4"	3/4" - 14 NPTF	4.12	104.6	1.98	50.3	1-1/2"	VEP6F6
3/4"	3/4" - 14 BSPP	4.12	104.6	1.98	50.3	1-1/2"	VEP6BF6
3/4"	1-1/16" - 12 ORB	4.12	104.6	1.98	50.3	1-1/2"	VEP6OF6
1"	1" - 11-1/2 NPTF	4.95	125.7	2.20	55.9	1-3/4"	VEP8F8
1"	1" - 11 BSPP	4.95	125.7	2.20	55.9	1-3/4"	VEP8BF8
1"	1-5/16" - 12 ORB	4.95	125.7	2.20	55.9	1-3/4"	VEP8OF8
1-1/4"	1-1/4" - 11-1/2 NPTF	5.43	137.9	2.73	69.3	2-3/16"	VEP10F10
1-1/4"	1-1/4" - 11 BSPP	5.43	137.9	2.73	69.3	2-3/16"	VEP10BF10
1-1/4"	1-5/8" - 12 ORB	5.43	137.9	2.73	69.3	2-3/16"	VEP10OF10
1-1/2"	1-1/2" - 11-1/2 NPTF	6.63	168.4	3.74	95.0	2-1/2"	VEP12F12
1-1/2"	1-1/2" - 11 BSPP	6.63	168.4	3.74	95.0	2-1/2"	VEP12BF12
1-1/2"	1-7/8" - 12 ORB	6.63	168.4	3.74	95.0	2-1/2"	VEP12OF12

Code 62

Flange Head Couplers



flange head coupler

Body Size	Port Size	Steel Part #
3/4"	3/4"	6VEPFH6
1"	1"	8VEPFH8
1-1/4"	1-1/4"	10VEPFH10
1-1/2"	1-1/2"	12VEPFH12

Flange Head Plugs



flange head plug

Body Size	Port Size	Steel Part #
3/4"	3/4"	VEP6FH6
1"	1"	VEP8FH8
1-1/4"	1-1/4"	VEP10FH10
1-1/2"	1-1/2"	VEP12FH12

Flange Pad Couplers



flange pad coupler

Body Size	Port Size	Steel Part #
3/4"	3/4"	6VEFPF6
1"	1"	8VEFPF8
1-1/4"	1-1/4"	10VEFPF10
1-1/2"	1-1/2"	12VEFPF12

Flange Pad Plugs



flange pad plug

Body Size	Port Size	Steel Part #
3/4"	3/4"	VEP6FP6
1"	1"	VEP8FP8
1-1/4"	1-1/4"	VEP10FP10
1-1/2"	1-1/2"	VEP12FP12

Dust Caps and Dust Plugs



Size	Material	Part #
1/4"	aluminum	VEP2DC-A
3/8"	aluminum	VEP3DC-A
1/2"	aluminum	VEP4DC-A
3/4"	aluminum	VEP6DC-A
1"	aluminum	VEP8DC-A
1-1/4"	aluminum	VEP10DC-A
1-1/2"	aluminum	VEP12DC-A
2"	aluminum	VEP16DC-A

Size	Material	Part #
1/4"	aluminum	2VEPDP-A
3/8"	aluminum	3VEPDP-A
1/2"	aluminum	4VEPDP-A
3/4"	aluminum	6VEPDP-A
1"	aluminum	8VEPDP-A
1-1/4"	aluminum	10VEPDP-A
1-1/2"	aluminum	12VEPDP-A
2"	aluminum	16VEPDP-A

VEP-BOP Series Hydraulic Couplings

Features

- Red powder coated components and external O-rings for easy BOP service identification
- Steel components are plated using ROHS compliant zinc nickel
- Blow-out preventer (BOP) coupling critical seals are severe service FKM
- Interchangeable with Stucchi VEP/VEP-HD Series, and DNP FSI-BOP Series

Specification

- Pressure rating 5000 PSI

Approvals

- BOP couplings have been fire tested and Lloyd's certified to 1300°F (700°C) in accordance with API 16D
- Certificate available upon request

Female Threaded Couplers

Body Size	Threads	Steel Part #
3/8"	3/8" - 18 NPTF	3VEPF3-BOP
1/2"	1/2" - 14 NPTF	4VEPF4-BOP
3/4"	3/4" - 14 NPTF	6VEPF6-BOP
1"	1" - 11-1/2 NPTF	8VEPF8-BOP
1-1/4"	1 1/4" - 11-1/2 NPTF	10VEPF10-BOP
1-1/2"	1-1/2" - 11-1/2 NPTF	12VEPF12-BOP



Female Threaded Plugs

Body Size	Threads	Steel Part #
3/8"	3/8" - 18 NPTF	VEP3F3-BOP
1/2"	1/2" - 14 NPTF	VEP4F4-BOP
3/4"	3/4" - 14 NPTF	VEP6F6-BOP
1"	1" - 11-1/2 NPTF	VEP8F8-BOP
1-1/4"	1 1/4" - 11-1/2 NPTF	VEP10F10-BOP
1-1/2"	1-1/2" - 11-1/2 NPTF	VEP12F12-BOP



Limited Warranty

DIXON VALVE AND COUPLING COMPANY, LLC (herein called "Dixon") warrants the products described herein and manufactured by Dixon to be free from defects in material and workmanship for a period of one (1) year from date of shipment by Dixon under normal use and service. Its sole obligation under this warranty being limited to repairing or replacing, as hereinafter provided, at its option any product found to Dixon's satisfaction to be defective upon examination by it, provided that such product shall be returned for inspection to Dixon's factory within three (3) months after discovery of the defect. The repair or replacement of defective products will be made without charge for parts or labor. This warranty shall not apply to: (a) parts or products not manufactured by Dixon, the warranty of such items being limited to the actual warranty extended to Dixon by its supplier; (b) any product that has been subject to abuse, negligence, accident, or misapplication; (c) any product altered or repaired by others than Dixon; and (d) to normal maintenance services and the replacement of service items (such as washers, gaskets, and lubricants) made in connection with such services. To the extent permitted by law, this limited warranty shall extend only to the buyer and any other person reasonably expected to use or consume the goods who is injured in person by any breach of the warranty. No action may be brought against Dixon for an alleged breach of warranty unless such action is instituted within one (1) year from the date the cause of action accrues. This limited warranty shall be construed and enforced to the fullest extent allowable by applicable law.

Other than the obligation of Dixon set forth herein, Dixon disclaims all warranties, express or implied, including but not limited to any implied warranties of merchantability or fitness for a particular purpose, and any other obligation or liability. The foregoing constitutes Dixon's sole obligation with respect to damages, whether direct, incidental, or consequential, resulting from the use or performance of the product.

Some products and sizes may be discontinued when stock is depleted or may require a minimum quantity for ordering.

Limits of Liability

This catalog is intended as a product offering. It is not intended to be a user or technical manual. Information in this catalog is subject to change without notice. All users and distributors of products sold through this catalog should contact Dixon with questions of use, compatibilities, coupling procedures, and life of product. Our full-time engineering and test staff are always available to recommend uses and to assist distributors and users with any questions.



Safety



Safety logos, which appear throughout our catalog, are used as a reminder that the user should carefully review for the appropriateness of the product for the media, application, and environment in which it will be used.

NOTE: Because of the health hazards associated with contamination and lead content in drinking water systems, Dixon couplings, unless otherwise specifically approved, are not recommended for potable water service and should not be used in applications where drinking water will contact the wetted surfaces of the coupling.



WARNING: Dixon products may contain chemicals known to the State of California to cause cancer, birth defects, or other reproductive harm.

Trademark

Kamvalok® is a registered trademark of OPW Engineered Systems.

Copyright

Copyright © 2021 by Dixon Valve and Coupling Company, LLC

All rights reserved. This book is copyrighted material. Use, reproduction or copying of it by anyone other than Dixon® is strictly forbidden without its express written consent.

NOTE: Reasonable care has been taken in preparing this catalog. Dixon Valve & Coupling Company, LLC reserves the right to make corrections.

