

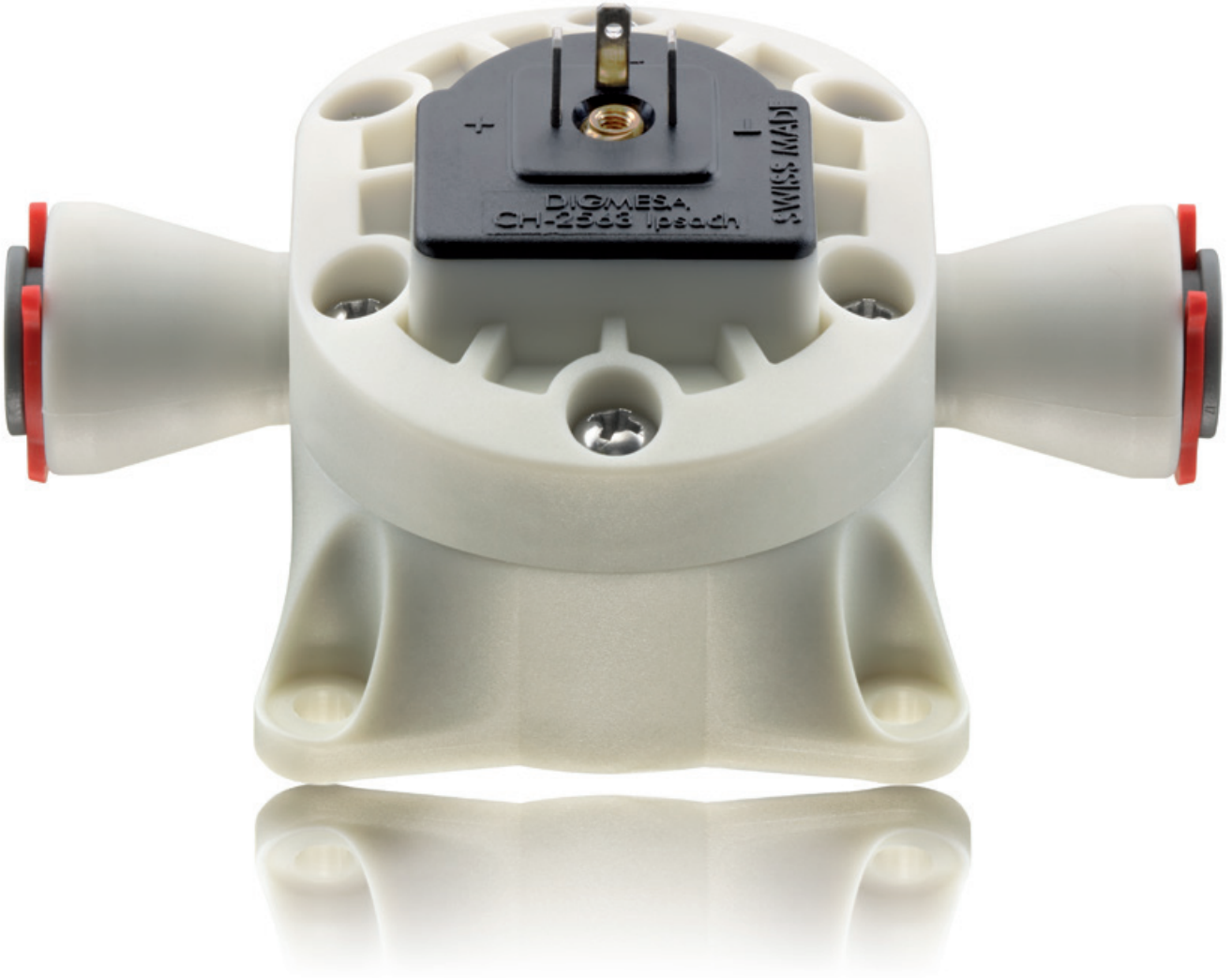


WWW.TEESING.COM

DIGMESA  
EPI  
- THE  
VISCOSITY  
LIQUID  
FLOW  
SENSING  
SOLUTION



WWW.TEESING.COM | +31 70 413 07 00



## Flow Sensor EPI Technical Information

This volumetric measuring device is suitable for measuring the flow rate in media with high viscosity, such as syrup, soap, lye, oil, ketchup and honey. The Classicline EPI is also available in PEEK, which features high chemical resistance; possible uses include sterilisation of surgical instruments in hospitals.

### Flow Rate l/min

---

Nozzle	Min	Max
7.0	0.065	16.00

### Output Signal

---

Pulse

### Material

---

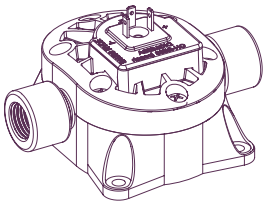
PBT (Fiberglass Reinforcement), PEEK

### Application examples

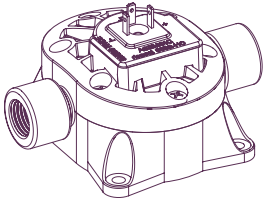
---

Viscous Liquids

Housing Material	EPI STD	EPI Chemistry
PBT (Fiberglass Reinforcement)	STD	-



PEEK	STD	STD
------	-----	-----



### O-Ring



Viton	STD	STD
EPDM	•	•

### Turbine

Turbine PEEK (sealed magnets)	STD	STD
-------------------------------	-----	-----



### Bearing Pin



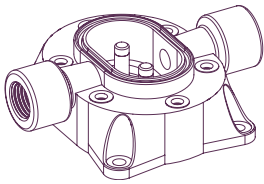
Inox	STD	STD
Ceramic	•	•

**Process Connection**

G1/4" BSP f/f

STD

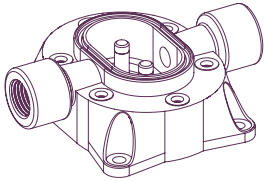
STD



G1/4" NPT f/f (only PEEK)

•

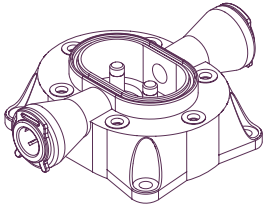
•



John Guest 3/8" f/f (only PBT Fiberglass Reinforcement)

•

–



**EI. Connection**

EPI STD

EPI Chemistry

3 pin amp unipolar

STD

STD

3 pin amp bipolar

•

•

3 pin amp bipolar PNP

•

•

3 pin amp unipolar LED

•

•



[WWW.TEESING.COM](http://WWW.TEESING.COM)

DIGMESA INTERNATIONAL LTD.  
BACHSTRASSE 3  
6362 STANSSTAD  
SWITZERLAND

[WWW.DIGMESA.COM](http://WWW.DIGMESA.COM)  
[INFO@DIGMESA.COM](mailto:INFO@DIGMESA.COM)

All measurements have been taken under ideal laboratory conditions.

[WWW.TEESING.COM](http://WWW.TEESING.COM) | +31 70 413 07 00